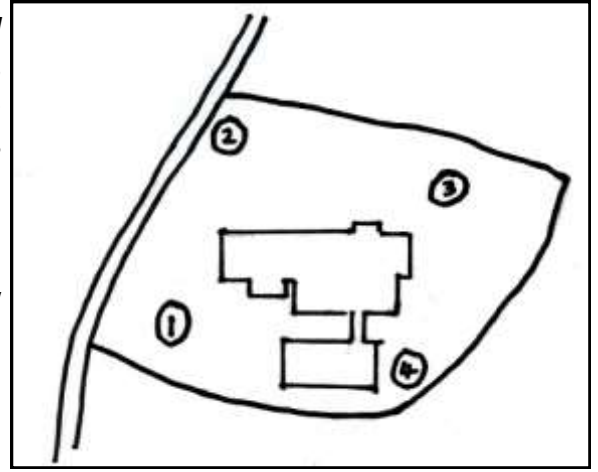


The only record of yews at this site is in *The King's England* (1936) when Kennington church is described as 'among yews visibly breaking up with age'. Four significant yews grow here and the site was visited in 1999 and 2013. The photographs are all from 2013.

Tree 1 is a female growing SW of the church. All that remains of what must have once been a huge bole is a narrow fragment (A), and growing next to it a young trunk (B) which appears to be a more recently developed part of the tree, linked to it at the moment by some pieces of dead sapwood. In 2013 it appeared to be in excellent condition. Girth, including the piece of stump but excluding B, was 21' 4" at 1' in 1999 and 21' 6" in 2013. Girth around the large fragment (A) was 19' 3" at 3' in 1999 and 19' 5" at 3' in 2013.





Tree 2: This male yew is youngest of the four, growing close to the road NW of the church. It is a tall narrow tree with reddish bark and large areas of dead wood. Girth recorded was 16' 9" close to the ground in 1999 and 16' 8" at approximately the same height in 2013. Three quarters of the tree's circumference not seen in the photo is covered in thick branches which emerge from just above ground level. It is a thickened horse shoe shape with internal growth.



Tree 3: This female yew, which now presents as two fragment trees, grows NE of the church. The two fragments are gradually drifting apart and wire has been stretched around some of the branches in an attempt to slow the process.

(A) which has an internal stem in its hollow, divides into two main growth areas with weaknesses that indicate possible further fragmentation. Many branches have been cut from this section. (B) divides into 3 main branches at 8/10'.

Girth of A was 13' 3" at 1' in 1999 and 13' 8½" at 1' in 2013.

Girth of B was 11' 7" at 1' (just above its bulging roots) in 1999 and 12' 2" at the same height in 2013.

Girth around both trunks at 1' was 21' 3" in 1999 and 21' 8½" in 2013





Tree 4, female, grows SE of the church. It appears to be two fragment trees, of which the smaller (A) appears to be dead; however it throws over a branch (C) at a height of about 10' which joins to the main trunk (B). A girth of 18' 2" at 3' was recorded in 2013.



Tim Hills - Ancient Yew Group - 2019