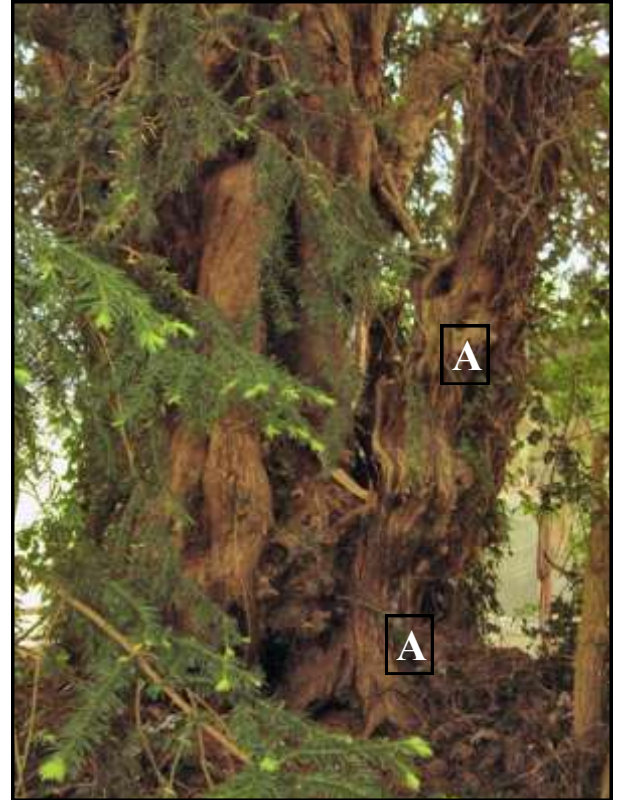


2000: The male tree grows east of the church, close to a steep drop into an adjoining garden. It has the appearance of a very old tree, with a section of dead sapwood at (A) looking ready to break away. The tree divides into 2 growth areas at about 8'/10'.



In *The Churchyard Yews of Gwent* J.Daryll Evans recorded a girth of 495 cm (16' 3") at 1m. The photos were taken by Geoff Garlick in 2005.