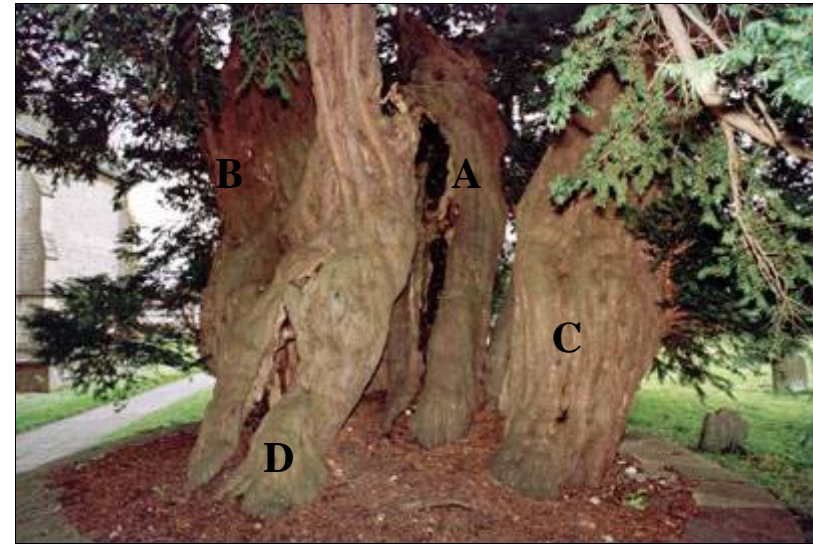


In 1944 Canon Goddard sent this information to Vaughan Cornish for *The Yew Tree and Immortality*: 'An ancient yew in front of the S door has a split trunk and spreading branches'.

In 1954 Revd F.R.St.John sent this information to EW Swanton for *The Yew Trees of England*: 'One of the branches is supported by props, and some by chains attached to the main trunk, which is surrounded by a massive stone seat'.

2003 The female yew grows just outside the church's south porch, with a neat circular wall about 18" high around its fragmented bole. The whole tree leans towards the east and the elaborate system of chains and props is still in evidence. Fragment (A) is supported on three props, having split from (D) as it leaned over. (B) supports a tall fluted branch while at (C) there is considerable lateral growth. Much of the foliage was brown.

Girth: The tree's lean, its spreading roots and bristly growth all affect girth, but I recorded 23' 1" at the ground and approximately 27' at 3'.



A 2nd significant yew, male, grows close to the building on the west side. A sizeable branch close to the ground has been removed creating a large hollow filled with internal growth.

Girth:

2003: 14' 8" at 1'; 16' 7" at 3'; 15' 2" at 5' - Tim Hills

2010: 15' 0" at 1'; 15' 10" at 2' and 16' 7" at 3' - Peter Norton