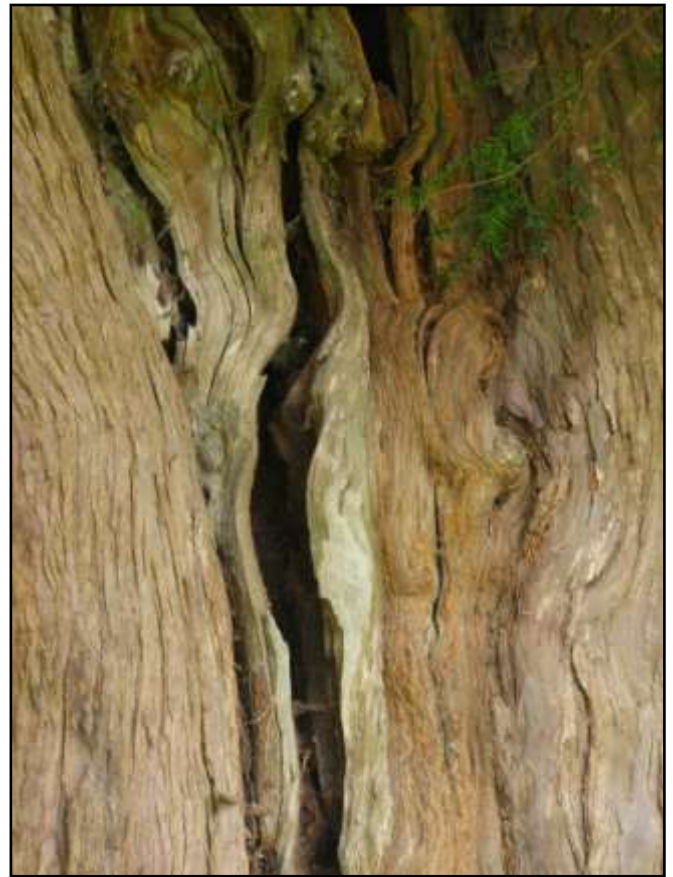


This is the only yew in the churchyard; it is male and grows SE of the church. A gash on its west side reveals internal growth and decaying heartwood.



The trunk on the east side (A) is of a very different appearance following the removal of many of the branches it once supported. New growth (B) is gradually wrapping round this old section of trunk. Girths were recorded as follows:

- 11' 11" keeping the tape 1' above sloping ground.
- 11' 9" at 1' above the higher ground with horizontal tape.
- 12' 4" at 3' above the higher ground with horizontal tape.

