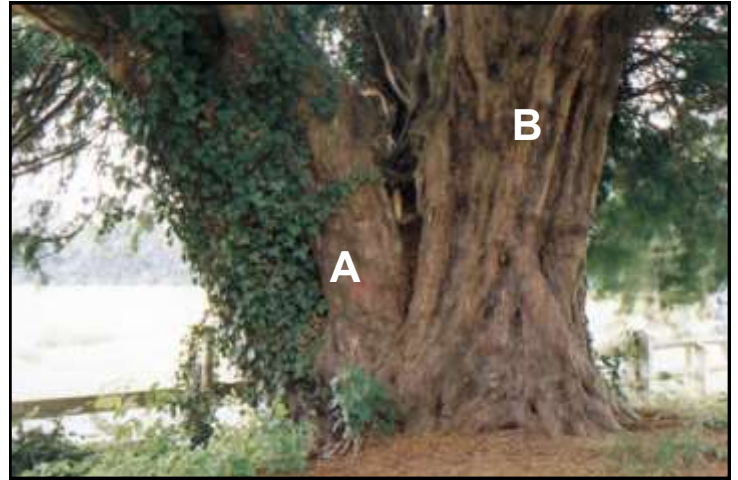
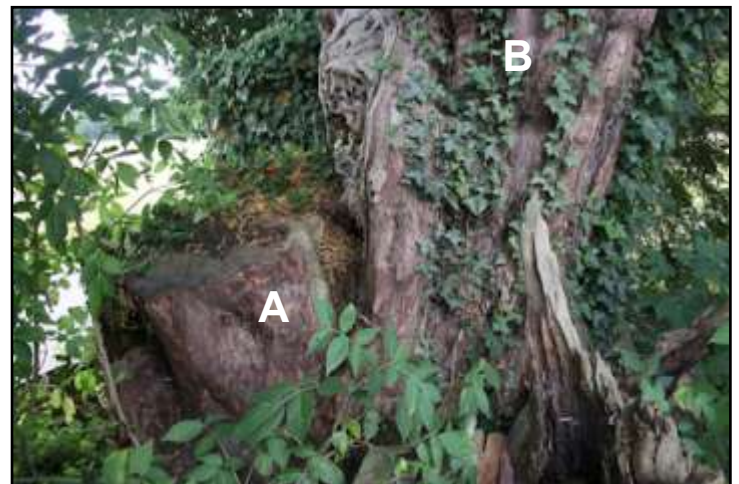


The male yew, SE of the church, is seen in the b/w photo of Petrie's 1807 watercolour. In 2002 it had begun to separate into what may eventually be two fragments. Girth was 17' 9", taped above the spreading roots of (B) but at the base of the leaning section (A). Foliage was thick and luxuriant.



When visited by Helen Leaf in August 2019 trunk (A) had been removed. The precise reason for this is not known. It has revealed considerable internal growth. On this occasion a girth of 5.76m at 0.5m was recorded.



In 2019 the churchyard had been left to be wild as part of the Caring for God's Acre project. On this occasion the three younger yews were also recorded by Helen Leaf, as follows:

On the SW boundary of churchyard is a female with a few ripe arils (August) and many that were unripe. Branches facing the road had been cut. There was much dead twiggy growth, but also lots of fresh young growth low on trunk.

A low large branch stretching off into the churchyard does not appear to be layering. A hollowing area was visible just above this branch. The tree could not be measured because of difficulty of access. Girth was estimated as 3m at 1.5m; 4.5m at ground level.



WSW of church with a straggly looking canopy, appearing as though some is missing, is a male with an estimated girth of 3m at 1m.

On the north side of the churchyard a female yew with a smooth clean trunk and a full canopy. Lichen was noted on some branches. Girth was 3.26m at 0.9m (below the large branches) .

