

1849 *A Topographical Dictionary of Wales* noted 'some yews of luxuriant growth' in this churchyard.

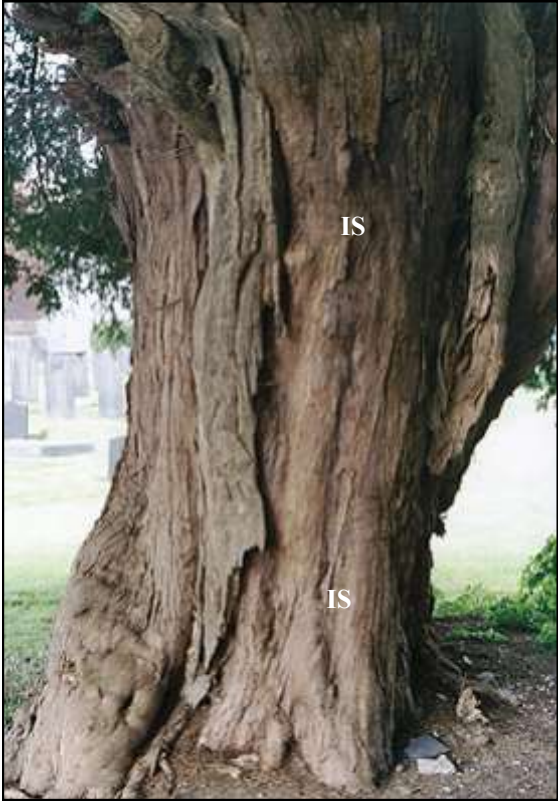
2004: Yews line the northern perimeter of this churchyard, with the largest at the entrance gate WNW of the church. Its massive main branch and other thick rising branches from a solid looking bole creates a tree of considerable presence. A girth of about 27' was recorded at the ground.



NW of the church is this 3 trunked yew, each one of similar size. The rising ground level now hides the original base of the tree. Measured around the three trunks close to the ground gave a girth of 20' 5".



The most interesting yew here is not on the perimeter, but grows about 10m north of the church. It is a female tree that has been larger, and whose internal stem (IS) is revealed. Girth was 12' 4" at 3'.



© Tim Hills - Ancient Yew Group - 2017